



## Fingal County Council

### **'Walk Bike Fingal!'**

### **Plan for Social Distancing in the Public Realm**

Fingal County Council acknowledges the changing needs of its communities during the Covid-19 pandemic by assessing and repurposing public road space to facilitate the increase in cyclists and pedestrians by giving them extra space to practice social distancing from each other.

During the needs assessment, it was determined that vehicular traffic on the roads has fallen nearly 50% with a corresponding fall in public transport use by 75% since the commencement of the Covid-19 restrictions.

In light of this and in response to requests, Fingal County Council Operations Department carried out an initial needs assessment with the aim of temporarily repurposing Fingal streets, roads and public realm spaces with the current needs of users in mind including those with prams and wheelchairs. Some people walking and exercising on busy and sometimes crowded footpaths are moving out into the road to preserve the required 2m social distance. Others, especially if walking with children are staying on the footpath but passing others at less than the 2m required distance and thereby risking infection rather than risking injury from vehicular traffic. Cyclists travelling on roads also need to preserve the 2m distance from each other. Both of these raise new road safety issues not experienced before to this extent.

With this plan, Fingal aims to provide residents with safe space to walk, run, exercise and travel by bike and adhere to the 2m rule. Fingal seeks to encourage physical activity at a safe social distance and thereby improving the physical and mental health of its citizens during this time of restricted movements. These temporary measures are being introduced by Fingal in consultation with Local Gardai.

Following initial assessment, Engineers have devised a phased plan for locations in Fingal towns and villages. These locations will have measures put in place to improve the social distancing in the public realm. Following monitoring of these initial locations, other areas will be assessed for the introduction of similar measures.

The measures put in place will be closely monitored by engineers and reviewed at intervals as the Government restrictions changes.

There are several classes of measures included in the Plan:

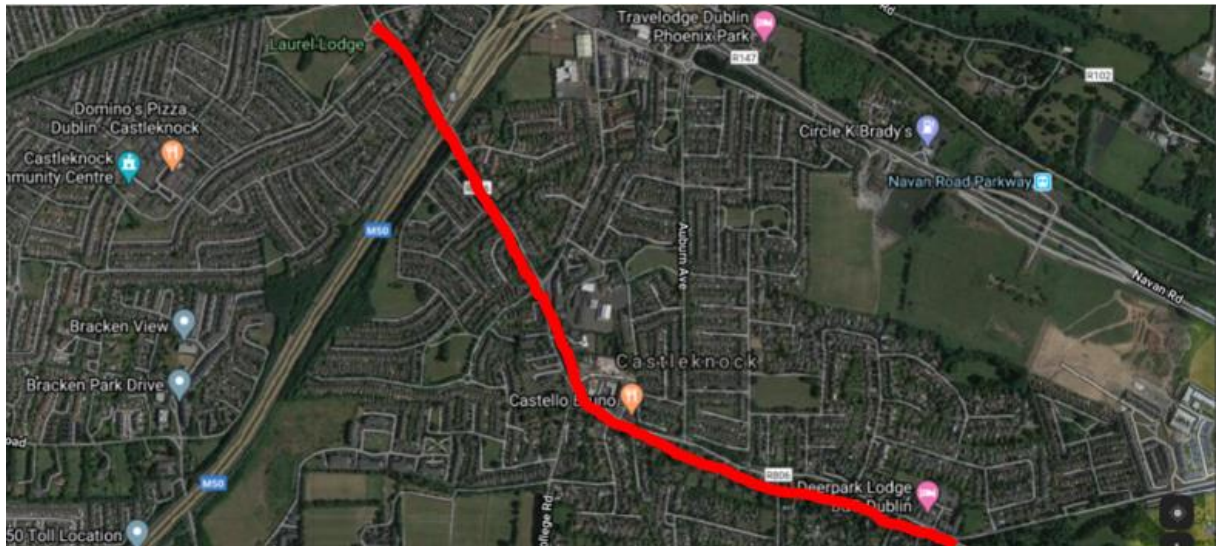
1. Removal of parking and loading bays to create / increase footpath widths
2. Consideration of temporary closure of currently under-used bus lanes to widen footpaths
3. Increasing footpath width temporarily using bollards and cones placed in the public roadway
4. Introduction of pedestrianised locations whilst maintaining motor vehicle access for deliveries and emergency responders
5. Introduction of one way systems, including the introduction of a temporary extra lane for walking and cycling where suitable
6. Reclassification of the modal hierarchy by the introduction of pedestrian and bike priority at pedestrian crossings by adjusting the lights sequence and timings and installation of signs indicating same to motorists
7. Installation of temporary cycle lanes to improve local connectivity between existing facilities such as greenways, existing unconnected cycle tracks, parks and open spaces.
8. Introduction of a network of calm, low-traffic residential streets
9. Implementation of temporary cycle lanes
10. Reallocation of traffic lanes for use by pedestrians and cyclists
11. Introduction of roadway queuing systems outside busy essential shops to reduce footpath congestion
12. Division measures in residential areas including the closure of through roads to provide 'exercise streets' particularly in locations where apartments are located where residents don't have access to a private garden space.

Please see below for the detailed plans for the interventions to be put in place at specific locations within the above list of towns and villages in order to minimize the spread of the virus:

Item No.	Townland	Road	Location	Description	Benefit	Required items
1	Castleknock	N3 Castleknock	R147 Laurel Lodge to Phoenix Park	Close bus lane and make it cycle only	Creates separation between cyclists & pedestrians as existing facility is shared	Physical segregation such as RB22 barriers
2	Balbriggan	R132 – Drogheda Street	270m section of R132 – Drogheda Street, removal of parking space on the East side from the it's junction of Loreto School Lane to George's Hill.	Removal of on street parking on the East side of the street.	Create a space to facilitate and encourage Social Distancing	Trial Cones & Signage and maybe physical segregation if a long-term requirement
3	Skerries	Harbour Road	Habour Road - restrict vehicular access to Harbour Road to residents only	Restrict vehicular access to Harbour Road to residents only	Create a space to facilitate and encourage Social Distancing	Trial Cones/Barries & Signage and observe
4	Howth	Main Street, Howth	Outside Centra shop	Removal of loading bay width of Centra Shop (with options to extend) except of deliveries	To allow shoppers sufficient space for Queuing and for pedestrians walking by	Physical segregation such as RB22 barriers and signage
5	Howth	Howth Road	Outside 'The Gem' shop	Removal of loading bay width of 'The Gem' Shop (with options to extend) except of deliveries	To allow shoppers sufficient space for Queuing and for pedestrians walking by	Physical segregation such as RB22 barriers and signage
6	Malahide	New Street	All New Street from Junction with Malahide Rd to Strand Street	Close road to traffic except for deliveries	To allow safe access for pedestrians/cyclists and for access to open shops nearby	Physical segregation such as RB22 barriers and signage
7	Malahide	R106	R106 Malahide from Townyard lane junction to New Street junction	Remove Parking bays	To allow shoppers sufficient space for Queuing and for pedestrians walking by	Physical segregation such as RB22 barriers and signage
8	Portmarnock	R106	Outside the Butchers J W Smyth	Closure of loading bay except for deliveries	To allow shoppers sufficient space for Queuing and for pedestrians walking by	Physical segregation such as RB22 barriers and signage

## Castleknock

Close bus lane on Castleknock Rd from the Phoenix Park through to Castleknock village and again out to Laurel Lodge and make it cycle only. This creates a space to facilitate and encourage Social Distancing

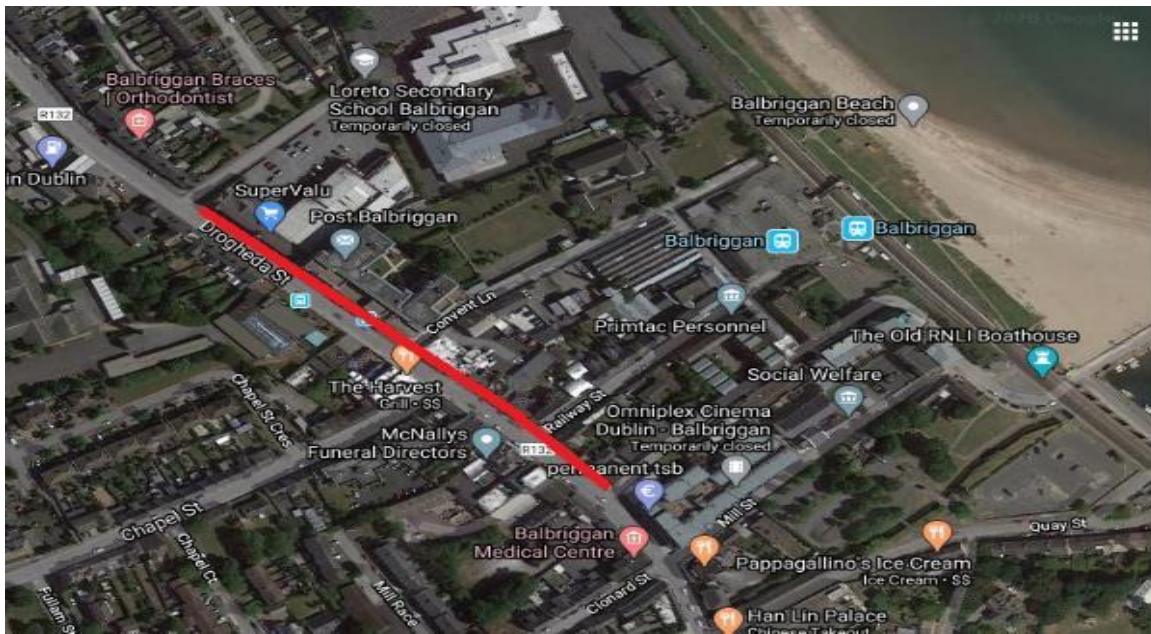


*Castleknock Road between Phoenix Park & Laurel Lodge*

## Balbriggan

R132 – Drogheda Street, removal of parking spaces on the East side from the its junction of Loreto School Lane to George’s Hill. It has been noted that there is a pinch point for pedestrians in this area with Super Valu, A Post Office and narrow paths along this stretch. Sectioning off the car parking spaces on the East of the Road as shown below would allow for more pedestrian space. Car parking spaces would remain open on the opposite side of the road and there are also car parking spaces in Super Valu.

270m Section of R132 - Drogheda Street <https://goo.gl/maps/78ria4oEt5K3nS6y6>

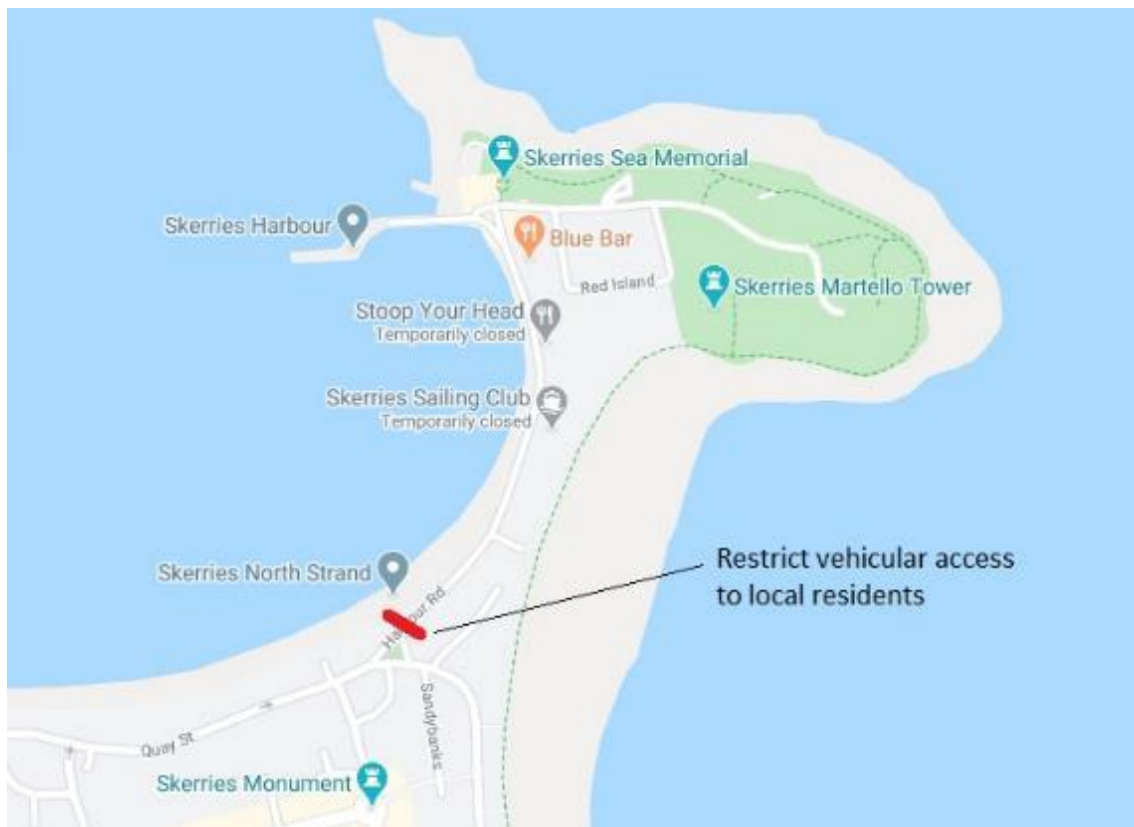


## Skerries

A study of social distancing was undertaken in Skerries. Consideration was given for measures on Strand Street, Church Street and Thomas Hand Street. It was considered that the width of footpaths allowed for comfortable social distancing. Consideration was also given to measures along the Coast Roads, however on inspection it was felt that social distancing was being observed by the public. Implementation of a road closure or similar steps on the Coast Road would need to be for a considerable section of the road to link in with other roads but this may indirectly encourage citizens to travel greater than the 2km.

Harbour Road - It was noted that even with the closure of carparks on Red Island that walkers were still driving to the location before taking daily exercise. It is proposed to restrict vehicular access to Harbour Road to residents only, as per image below.

Harbour Road - <https://goo.gl/maps/jT61Nyi4ac3ZFqCm9>



# Howth

## Main Street

1. Removal of the Loading Bay for the entire length of the Centra Shop on Main street, Howth . There is an option to extend this pedestrianized area as far as the Pharmacy beside the café but less of an issue of people queuing outside Pharmacy was observed during the study period. May change as Government restrictions are lifted



*Removal of Loading bay and Parking spaces, Main Street Howth and extension of Pedestrian area to facilitate queueing*



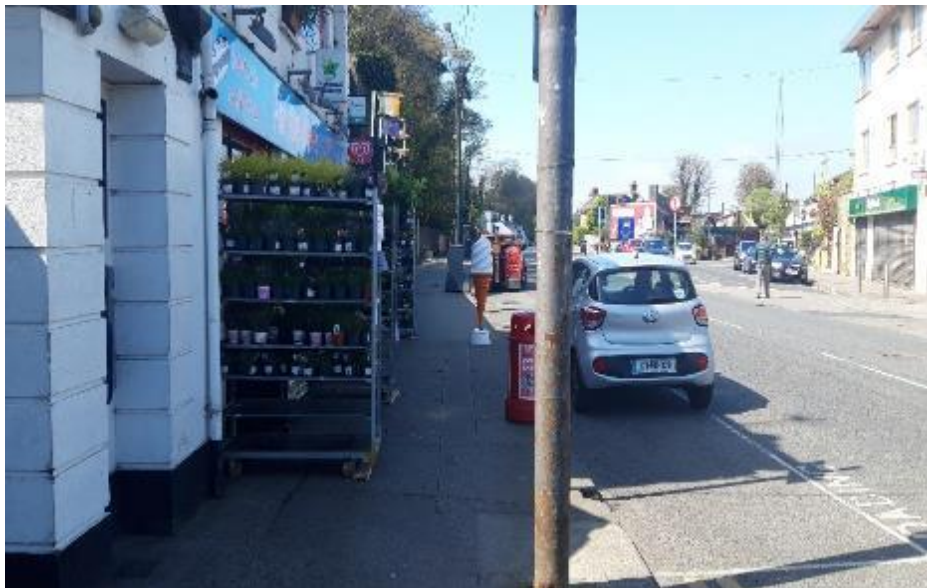
*Centra In Main Street Howth*

## Howth Contd. Howth Road

2. Removal of the loading bay and several parking spaces outside 'The Gem' The footpath is narrow here.



*Removal of parking spaces & loading bay at The Gem, Howth Road and replacement with pedestrianized area*



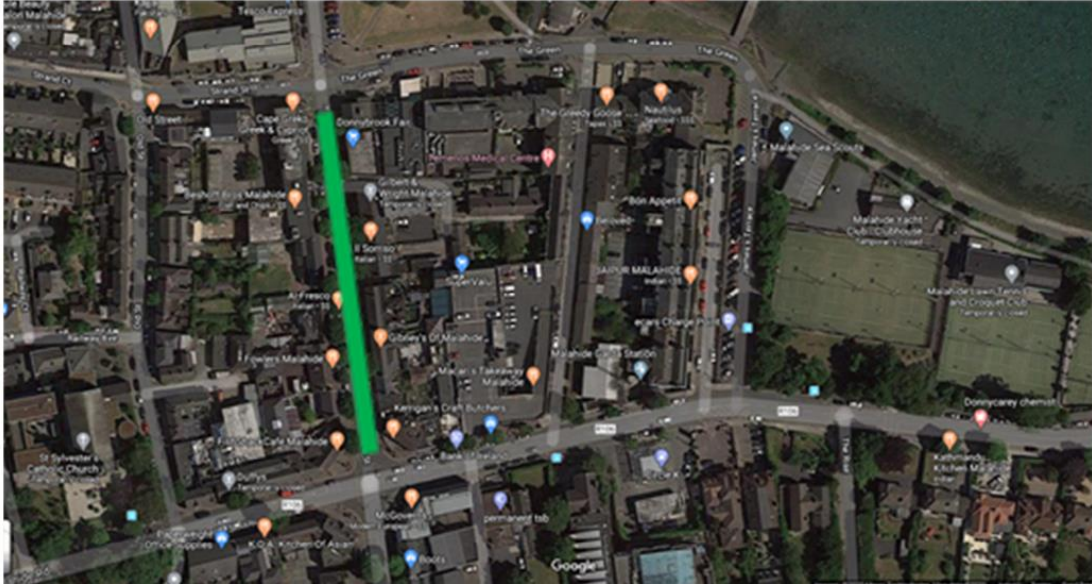
*The Gem - Entrance to Howth*



# Malahide Village

## New Street

New Street to be closed off at both ends of the street for pedestrian and cyclists use only given the congestion of the existing footpaths. Access for deliveries to businesses that are open will be maintained. The Taxi rank will be impacted upon and will need to be moved elsewhere. The area will need to be monitored to ensure unwanted congregation due to the attraction of the pedestrianized zone does not occur.

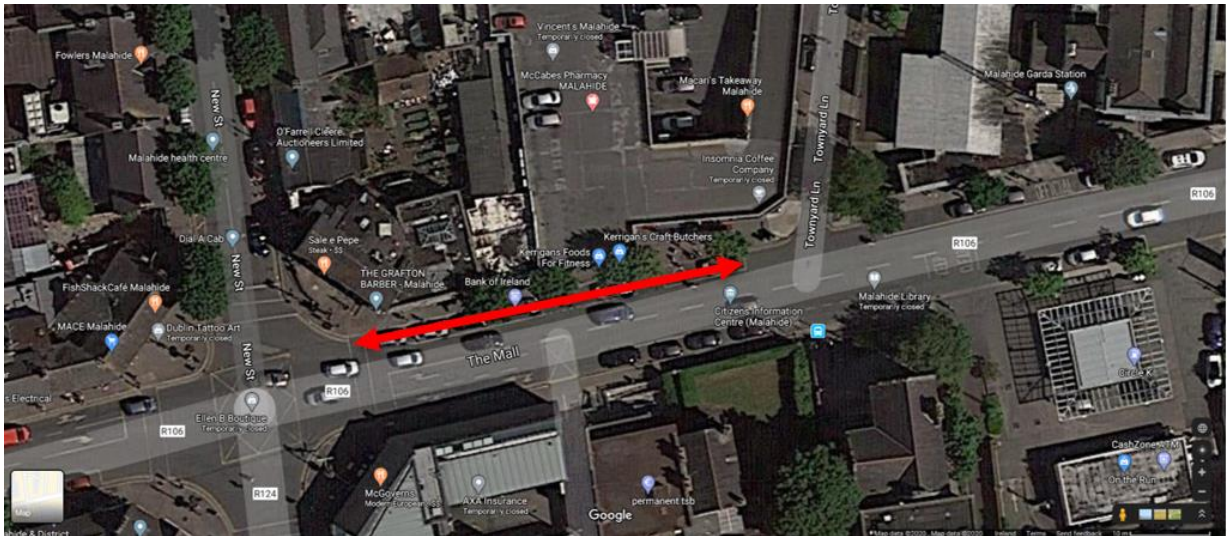


*New Street Malahide Pedestrian / Cycle zone*

## Malahide Village Contd.

### The Mall

The footpath at the junction of Malahide Road/Townyard Lane toward New Street is extremely busy with shoppers/walkers trying to social distance unsuccessfully at the location. The closing of parking spaces and loading bay and extension using temporary bollards to increase the area available to pedestrians.



*Removal of parking spaces on the Mall, Malahide to increase pedestrian area to facilitate social distancing for pedestrians*

## Portmarnock

The loading bay and car parking spaces directly outside of the Butcher – J.W Smyth need to be removed and segregated temporarily to allow for pedestrians to pass at a 2m distance whilst customers are queueing for entry to the butchers shop. Loading can be facilitated in the adjacent off road car park which is intended for normal customer use. Loading need not occur at the loading bay during this time of segregation



*Loading bay and car parking spaces directly outside the Butcher – J.W Smyth, Portmarnock*