



REPORT ON NATIONAL TRANSPORT AUTHORITY PROGRAMME - ACTIVE TRAVEL AND SUSTAINABLE TRANSPORT IN FINGAL ITEM 38

Presentation to Fingal Council, 8th March 2021

Sinéad Murphy, Senior Engineer, Active Travel (Environment Climate Action & Active Travel Dept)
Paul Carroll, Senior Engineer, Transport Planning (Planning & Strategic Infrastructure Dept)

Active Travel & Sustainable Transport Unit



Our Ambition

To **develop** high quality walking and cycling facilities - encourage more people to switch to active travel and will contribute to tackling climate change

- **Commitments** in the Programme for Government
- Establish **multi-disciplinary** team – cross departmental Sustainable Transport Unit – engineers, planners, communications, urban design...
- Excellent **design** - to connect communities and make walking and cycling attractive, safe and accessible to everyone
- Cross community **support**



Active Travel & Sustainable Transport

Infrastructure Programmes

- Capital Programme: FCC own funds, NTA and other central funding. Includes road schemes, cycle routes and greenways, all of which are developed on multi-modal basis
- Active Travel Programme: provision of protected/segregated cycle lanes, Safer Routes to Schools, Bike Sharing, road safety, covid mobility measures - 2020 stimulus package roll over
- NTA/FCC Five Year Implementation Plan



1. Fingal Capital Programme 2021-2023

- €126m over three years
- 34 schemes, from feasibility to construction
- Approx 120km total length
- Includes funding from NTA, URDF, Greenways (Carbon Tax), LIHAF and FCC own funds.
- Greenway highlights: Fingal Coastal Way, Broadmeadow Way, Sutton-Malahide and Royal Canal Greenway
- Major road schemes: Hole in the Wall, Church Fields, Snugborough, Ongar-Barnhill, Airport Western Access.

Capital Programme includes roads and transportation infrastructure to service development lands and improve accessibility to towns and villages, e.g. LIHAF schemes



Donabate Distributor Road



Rathbeale Road, Swords

Fingal Greenways



Baldoyle – Portmarnock Greenway - Completed



Fingal Coastal Way – Emerging Preferred Option



Broadmeadow Way – Detailed Design



Royal Canal – Emerging Preferred Option



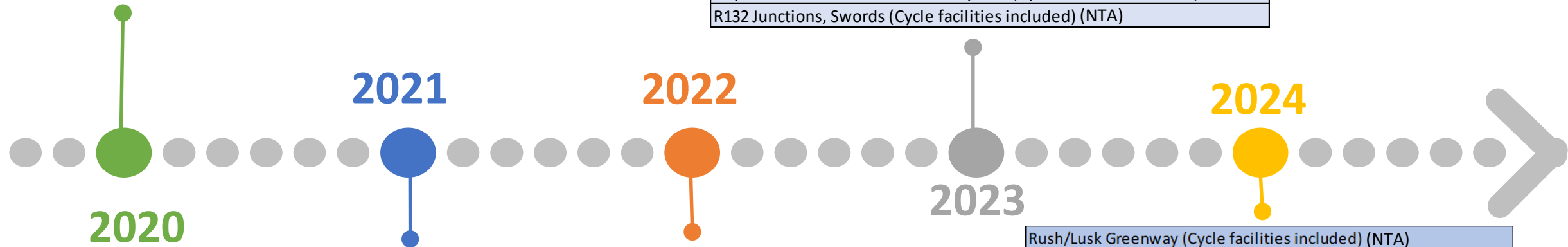
Sutton – Malahide Greenway – Emerging Preferred Option

FCC Capital Programme 2020-2022

Construction/Implementation Timeline

On Site / Completed
Donabate Road (LIHAF) (Cycle facilities included)
Hole in the Wall Road, Baldoye (LIHAF) (Cycle facilities included)
Rathbeale Road (LIHAF) (Cycle facilities included)
Park Road Upgrade, Rush (Cycle facilities included)
Prospect House, Donabate (footpath improvements)

Sutton to Malahide Greenway (NTA)
Fingal Coastal Way Greenway (DTTAS, URDF, FCC)
Royal Canal Greenway (NTA)
Harry Reynolds Road cycle route (NTA)
N3 Upgrade
Kellystown Road (Cycle facilities included)
S2S Extension cycle route (NTA)
Royal Canal-Grand Canal Greenway Link (Cycle facilities included) (NTA)
R132 Junctions, Swords (Cycle facilities included) (NTA)



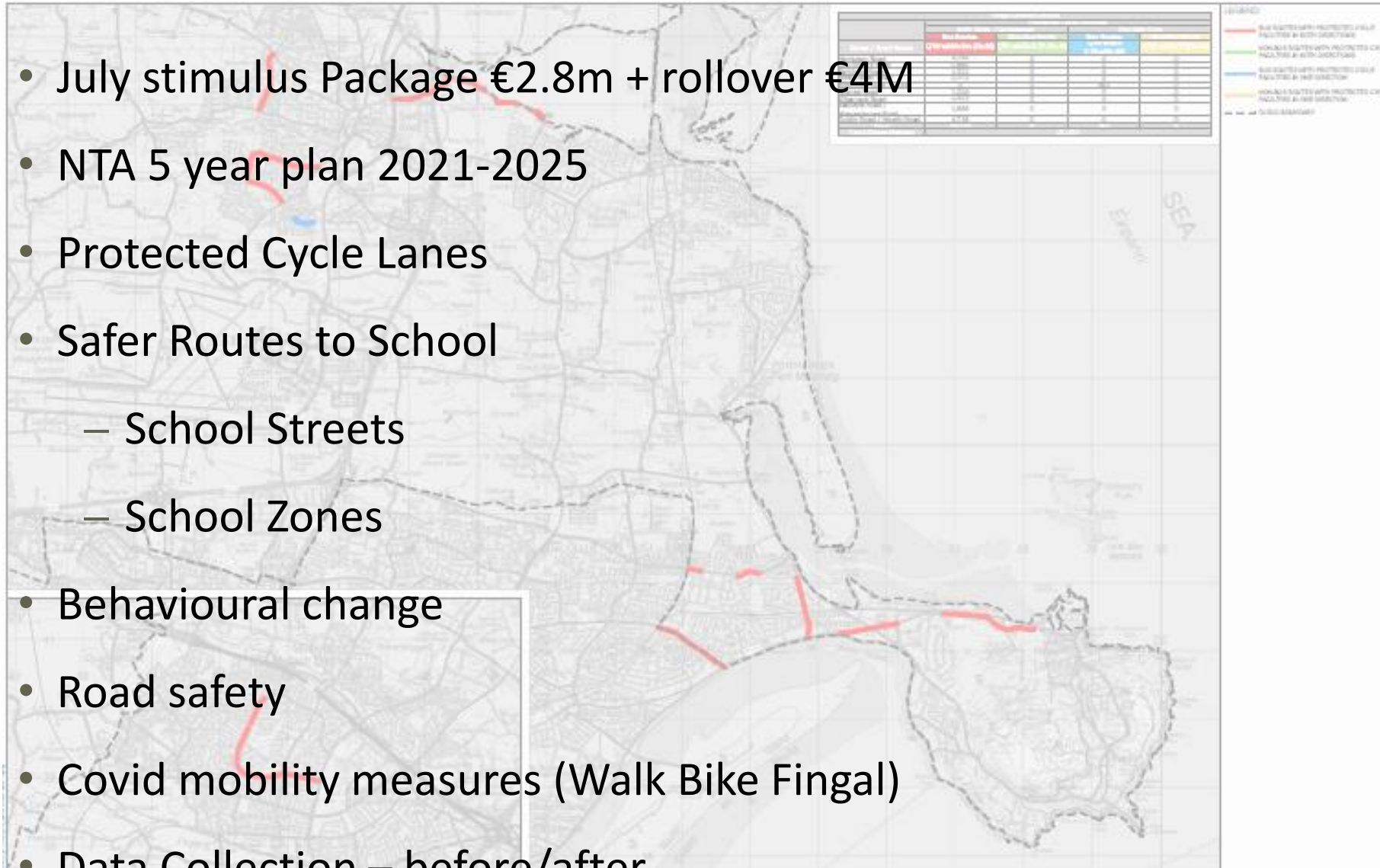
Broadmeadow Way (NTA)
Churchfields Link Road (Cycle facilities included) (NTA, DHPLG)
Snugborough Interchange (Cycle facilities included) (NTA)
Hearse Road Donabate (Cycle facilities included) (NTA)
Donabate Green Routes footpath improvements
Ongar to Barnhill Link Road (Cycle facilities included)
Donabate Pedestrian Bridge (Cycle facilities included) (NTA)

Rush/Lusk Greenway (Cycle facilities included) (NTA)
Balscadden Beach Access, Howth (Cycle facilities included)
Donabate Distributor Road Phase II (Cycle facilities included)
Fosterstown Link Road (Cycle facilities included)
Kinsealy Lane Upgrade (Cycle facilities included)
Dublin Airport Roundabout Upgrade (Cycle facilities included)
Dublin Airport Western Access (Cycle facilities included)
Barrysparks Link Road (Cycle facilities included)
Blakes Cross (Cycle facilities included) (NTA)
Ward River Crossing, Swords (Cycle facilities included)
Station Road, Portmarnock (Cycle facilities included)
Blanchardstown-Phoenix Park Cycle Route Design (NTA)
Kinsealy-Portmarnock Cycle Route Design
Damastown-Clonsilla Cycle Network (NTA)
Swords Transport Network (Cycle facilities included) (NTA)

2. Active Travel Programme



- July stimulus Package €2.8m + rollover €4M
- NTA 5 year plan 2021-2025
- Protected Cycle Lanes
- Safer Routes to School
 - School Streets
 - School Zones
- Behavioural change
- Road safety
- Covid mobility measures (Walk Bike Fingal)
- Data Collection – before/after



National Programme for Government Cycling Programme Proposals

FCG - P & SI current projects
July stimulus package



Fingal Capital Programme 2020-2022

NTA Stimulus funding

2020 - €2.8M over 4 months

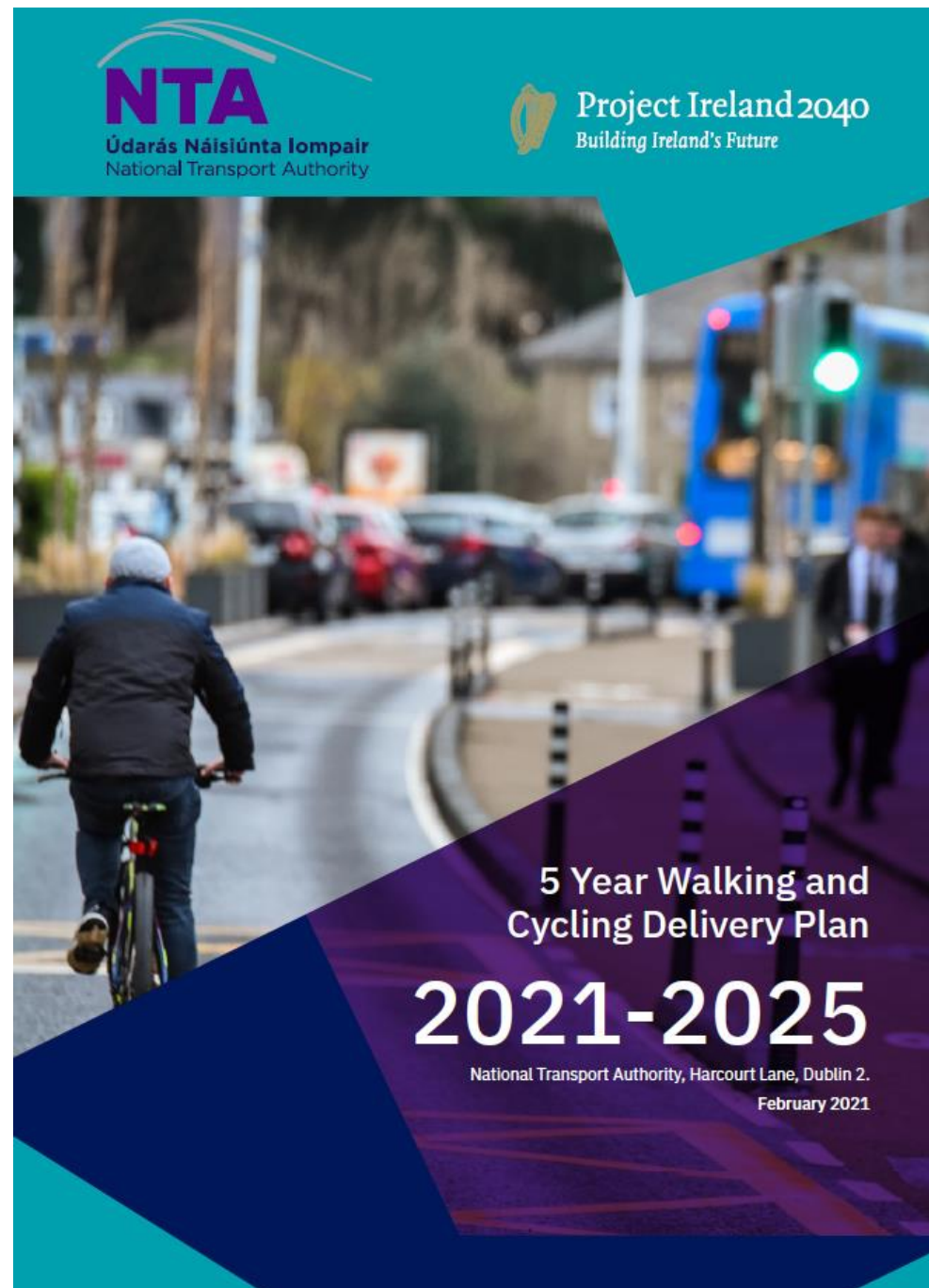
2021 - €4m

13 schemes, short-term implementation

24km total



- Published Feb 2021



National Programme for Government Cycling Programme Proposals



3. Fingal 5 year plan

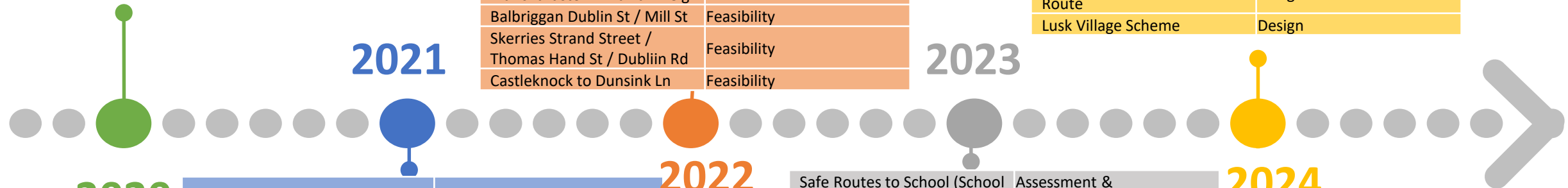
- NTA 5 year Implementation Plan 2021-2025 
 - committed funding & resources
- Capital Programme 2021 – 2023 

FCC Active Travel Programme 2021-2025

New St Malahide	Trial pedestrianisation
Hartstown/Huntstown/Mountview Road	Phase 1 construction
St. Cronin's Road	Design & prelim works
Rathingle Road	Phase 1 construction
River Valley Road	Phase 1 construction
Boroimhe Road / L2300	
Grange Road	Design & prelim works
R132 Ministers Road to Blakes Cross	Design
Baldoyle Road / Warrenhouse Road	Design
Dublin Road / Howth Road	Design

New St Malahide	Construction
Safe Routes to School (School Streets/School Zones)	Assessment & implementation (10+10)
Bus Gate @ Littlepace	Construction
Bike Parking	Installation 400+ Racks
Snugborough Rd - NAC to Ongar	Design - Subject to resources/construction
Dublin Road to Dublin Street Baldoyle	Design - Construction
Clonee to Blanchardstown SC	Design - Construction
Skerries - Balbriggan St/Balbriggan Rd	Design
FCC Castleknock to Blanchardstown via Farmleigh	Feasibility
Balbriggan Dublin St / Mill St	Feasibility
Skerries Strand Street / Thomas Hand St / Dubliin Rd	Feasibility
Castleknock to Dunsink Ln	Feasibility

Safe Routes to School (School Streets/School Zones)	Assessment & implementation (10+10)
Bike Parking	Installation 400+ Racks
FCC Castleknock to Blanchardstown via Farmleigh	Construction
Luttrelstown to Ballycoolin Rd	Design
Balbriggan Dublin St / Mill St	Construction
Drogheda St Balbriggan	Design
Skerries Strand Street / Thomas Hand St / Dubliin Rd	Construction
Castleknock to Dunsink Ln	Construction
Lusk Station Road - East - West Route	Design
Lusk Village Scheme	Design



2020

New St Malahide	Design / Public Consultation
Hartstown/Huntstown/Mountview Road	Phase 2 construction
St. Cronin's Road	Phase 1 & 2 construction
Rathingle Road	Phase 2 construction
River Valley Road	Phase 2 construction
Boroimhe Road / L2300	Design & prelim works
Grange Road	Phase 1 & 2 construction
R132 Ministers Road to Blakes Cross	Phase 1 & 2 construction
Baldoyle Road / Warrenhouse Road	Phase 1 & 2 construction
Dublin Road / Howth Road	Phase 1 & 2 construction
Safe Routes to School (School Streets/School Zones)	Assessment & implementation (5+5)
Bus Gate @ Littlepace	Design
Bike Parking	Installation 400+ Racks
Snugborough Rd - NAC to Ongar	Design - Subject to resources

2022

Safe Routes to School (School Streets/School Zones)	Assessment & implementation (10+10)
Bike Parking	Installation 400+ Racks
Snugborough Rd - NAC to Ongar	Construction
Clonee to Blanchardstown SC	Construction
Skerries - Balbriggan St/Balbriggan Rd	Construction
FCC Castleknock to Blanchardstown via Farmleigh	Design
Luttrelstown to Ballycoolin Rd	Feasibility
Balbriggan Dublin St / Mill St	Design
Drogheda St Balbriggan	Feasibility
Skerries Strand Street / Thomas Hand St / Dubliin Rd	Design
Castleknock to Dunsink Ln	Design
Lusk Station Road - East - West Route	Feasibility
Lusk Village Scheme	Feasibility

2024



Kerb Protected Cycle Lanes



Fingal County Council

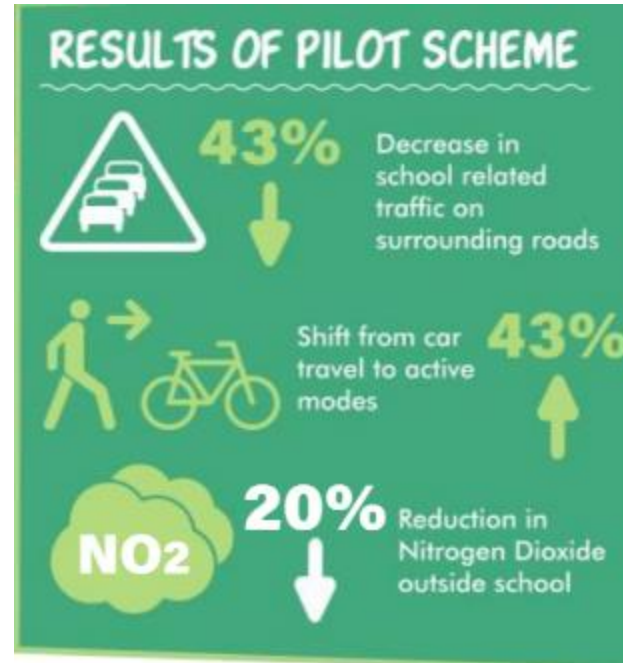


fingal.ie

Safer Routes to School



Fingal Safer Routes to School:
Programme Management
February 2021



School Streets



Fingal

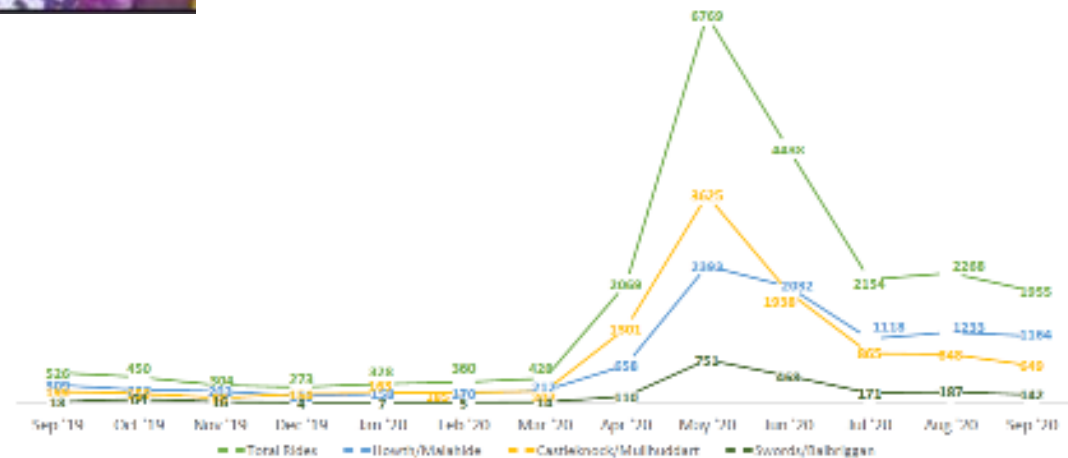


Behavioural change

- Bike Sharing Scheme
- Community Car
- Road safety



cheme - Monthly Bike Rides (previous 12 months)





Pedestrianisation

One-Way Systems

BEFORE



AFTER



Connectivity



On street parking, Kissing gates, footpath widths/condition, continuity, estates closed off to cycle/bus network, discontinuity, lack of facilities at junctions etc





fingal.ie

Active Travel & Sustainable Transport – 5 year plan – Keys to Success



- Development Plan Review
- Committed funding
- Committed resources
- Change
- Community & political support





Thank You

Go raibh maith agaibh